



更多产品信息敬请关注  
官方微信号: SOCMA123



福建华南重工机械制造有限公司  
地址: 福建省泉州市台商投资区  
国内销售: 0595-27393198 27393199 传真: 0595-27393200  
邮箱: office@socmachinery.com  
国际销售: 0592-5650603 传真: 0592-5650876  
邮箱: sales@everma.com.cn 网址: http://www.socma.net  
客服热线: **400-0068-123**

FUJIAN SOUTHCHINA HEAVY MACHINERY MANUFACTURE CO., LTD.  
Address: Taiwanese Investment Area, Quanzhou City, Fujian  
Domestic Sales Tel: 0086-595-27393198 27393199 Fax: 0086-595-27393200  
Email: office@socmachinery.com  
International Sales Tel: 0086-592-5650603 Fax: 0086-592-5650876  
Email: sales@everma.com.cn jackson@socmachinery.com  
Website: www.socmachinery.com

Customer Service Hotline / **400-0068-123**



中国质量认证中心  
CHINA QUALITY CERTIFICATION CENTRE  
NO. 00114Q28682R1M/3500



NO.0E160502.FSHUQ35



**福建华南重工机械制造有限公司**  
FUJIAN SOUTHCHINA HEAVY MACHINERY MANUFACTURE CO., LTD.

# 公司简介

COMPANY PROFILE



福建华南重工机械制造有限公司致力于物流搬运机械和工程机械的研发和生产。

目前产品范围包括：重型叉车、越野叉车、伸缩臂叉车，正面吊等物流搬运机械，挖掘机，装载机等工程机械，以及定制应用于金属铝冶炼行业的扒渣车。

Fujian Southchina Heavy Machinery Manufacture Co. Ltd. is dedicating the research and development of material handling equipment and construction machinery. The current products ranges cover:

1. material handling equipment including heavy duty forklift, rough terrain forklift, telescopic forklift, reach stacker .
2. construction machinery including wheel excavator, wheel loader.
3. Slagging truck, which is customized for using in the metal smelting industry.

SOCMA  
华南重工



### ※ 华南重工的使命

致力于为客户提供最为皮实耐用、高性价比、高回报率物流搬运机械及工程机械产品和服务

### ※ 华南重工的愿景

让SOCMA成为中国装备制造业的一面旗帜

### ※ 华南重工的核心价值观

以客户为中心，以奋斗者为本，坚持自我批判与反省，华南重工将长期处于成长阶段

#### •The mission of SOMCA

Dedicating to provide the most sturdy and durable, high cost-effectiveness, high return rate material handling equipment, construction machinery products and service to our client

#### •The vision of SOCMA

Let SOCMA become the model enterprise in national industry

#### •The core value of SOCMA

Customer oriented, staff foremost, insist on self criticism and Intropection, SOCMA is growing up always

实在，值得信赖

OUR QUALITY IS IN THE HABIT



BREAKTHROUGH



INNOVATION



GROWTH





适应性广，效益高，集叉车、装载机、吊车功能为一体  
卓越的越野性能和广泛的使用范围，加强型工作装置设计、质量稳定

Wide adaptability and high efficiency, integrate the fuctions of forklifts, loaders and cranes  
Excellent cross-country and extraordinary operation scope  
Enhanced work device design, stable quality

## 伸缩臂吊装机 Telescopic Crane Loader

### HNT-110

### 主要特点 FEATURES

HNT-110伸缩臂吊装机底盘采用前轮驱动，后轮转向，刚性悬挂；传动采用前后各两档液力变矩传动变速箱，全液压力转向，制动为气推油鼓式制动；工作装置为三节四边形伸缩臂和一个吊臂快换装置及吊钩组成。该机可用于集装箱石材的吊装作业，也可作为一般吊车使用，可广泛用于工厂、码头、货场、林场、建材、仓库、物流等行业，是一种适应性广、效率高的装卸机械。

HNT-110 telescopic crane loader, the chassis is front-wheel drive, rear-wheel steering, rigid suspension; adopt hydro-mechanical transmission with two-speed forward and two-speed reverse, full hydraulic power steering, and air-over-oil type drum brake; the working device is composed of the three-stage quadrilateral telescopic boom and boom quick change device and hook. This telescopic crane loader is not only applicable to lift the stone slabs in containers, but also can be used as a general crane, can be widely used in factory, dock, freight yard, forest farm, construction material, warehouse, logistics and other industries. It is a loading and unloading machine with wide adaptability and high efficiency.



### 伸缩臂叉装机：主要特点

华南重工系列伸缩臂叉装机是一种新型装卸机械，它备有货叉和侧移工作装置，适合于从事成箱货物的起重和堆垛，也可在市政工程施工中从事道路照明设备的安装检修等高空作业和各种地下管道（例如自来水管、煤气管等）的安装铺设等作业，并能广泛地适用于工厂、车站、码头、货场、邮电、林场、建材、仓库等场所，是一种适应性广和效率高的装卸机械。

### Telescopic Forklift: Introduction

SOCMA telescopic forklift is a new type of loading and unloading machine, which was equipped with fork and side shifter. The machine is suitable for the lifting and stacking of cargoes, and can also be used in installation and maintenance of road lighting equipments and installation of various underground pipes (such as water pipes, gas pipes, etc.). And can be widely applied to factories, stations, docks, freight yard, post and telecommunications, forest, building materials, warehouses and other places. It is a wide adaptability and high efficiency loading and unloading machine.

我们的专业，推动您的事业  
OUR SPECIALITY PROMOTE YOUR CAREER



# 实在，值得信赖

OUR QUALITY IS IN THE HABIT

## 产品描述

PRODUCT  
DESCRIPTION



1、采用知名品牌柴油机，动力强劲，节能环保，满足高效作业要求。

2、双涡轮液力变矩器无级变速；单杆操纵变速系统，前后各二挡，操纵更简便。

3、采用双泵合流工作液压系统，大幅度降低油耗、能耗。

4、采用全液压同轴流量放大转向系统，后转向桥转弯半径小，转向轻便灵活。

5、采用前轮驱动、刚性悬挂，后桥转向驱动结构。可实现四驱功能。前桥螺旋伞齿轮和轮边行星轮减速增扭，负荷能力大。

6、采用整体式车架，可提供良好的刚性和强度，保证此车型底盘的高可靠性。

1.Using well-known brand diesel engine, strong-power, energy saving and environment protection, to meet the requirements of efficient operations

2.Double turbo hydraulic torque converter, stepless speed change. Single-lever control transmission system, with 2 speeds for forward and reverse gears, easier to operate

3.Use dual-pump combined hydraulic system, greatly reduce the fuel consumption and energy consumption

4.With full hydraulic coaxial flow amplification steering system, turning radius for rear steering axle is small, steering light and flexible

5.Using front wheel drive, rigid suspension, rear axle steering structure, can achieve four-wheel drive. Front axle spiral bevel gear and wheel side planetary wheel to reduce the speed and increase torque, have excellent load capacity

6.Using the integral frame, can provide good rigidity and strength, to ensure high reliability of this type of chassis.

7、作业装置为两节四边形伸缩式工作臂，伸缩臂采用大截面、高强度的四边形结构。

8、本机型标配货叉，可选配铲斗、货叉套及高空作业平台。标配快换货架，可选配调距货架及侧移货架。实现多种用途。

9、采用可调式方向机，航空座椅，先导阀控制分配阀和工作装置油路，操纵轻便灵活，坐感更舒适。

10、采用免维护蓄电池，驾驶室配置风扇、收音机、冷暖空调，工作更舒适可靠。

11、整机造型大气、优美、流畅；豪华宽视野驾驶室，噪音低，密封性好，便于驾驶员四周观察。

12、本系列车型标配电子手刹功能，相较于软轴式手刹，在操作性，美观性，以及灵敏度方面都有大幅度的提升。

13、本系列车型标配电子脱桥功能，相较于手动软轴式脱桥机构，操作更方便，更简洁。在性能上也得到了极大的提升。可实现两驱四驱功能的切换，可以更好的适应不同的路况，以减低轮胎的磨损程度，更好的保护轮胎。

14、部件国产化、标准化、性价比高，配件通用性好易采购，日常维护保养方便快捷。

7.Working device is two stage quadrilateral telescopic working arm, telescopic arm use large cross-section, high-strength quadrilateral structure.

8.This model standard with forks, bucket, extension forks and aerial work platform are optional. Standard with quick hitch, can choose fork positional and side-shifter.

9.The use of adjustable direction machine, air seat, joystick control valve control distribution valve and work device oil, light and flexible operation, sitting more comfortable.

10.Using maintenance-free battery, cab match with fan, radio, air conditioning, more comfortable and reliable.

11.The whole shape of the atmosphere, beautiful and smooth; luxury wide view cabin, low noise and good sealing.

12.This series models standard with electronic hand-brake, compared to the soft-axis handbrake, have a substantial increase in the operability, aesthetics and sensitivity.

13.This series models standard with electronic off-axle function, compared to the manual soft shaft off-bridge mechanism, the operation is more convenient and concise, the performance also been greatly improved, can achieve two-wheel drive and four-wheel drive switch, can better adapt to different working conditions and reduce the degree of tire wear, protect the tiers better.

14.Parts are the localization, standardization, cost-effective, easy to purchase and daily maintenance.

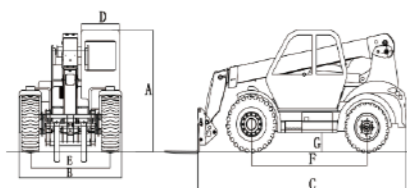
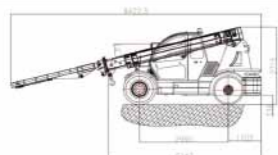


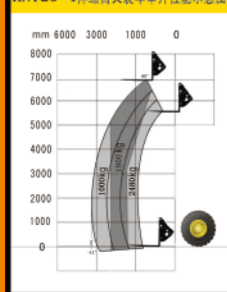
图1-1 整机尺寸图

Picture 1-1 Overall Dimension

代码 Code	名称 Description	参数 Parameter (mm)
A	高 Height	2485
B	宽 Width	2390
C	长 Length	4865
D	驾驶室内部高度 Cab inside height	790
E	轮距 Wheel tread	1870
F	轴距 Wheelbase	2700
G	最小离地间隙 Min. ground clearance	400

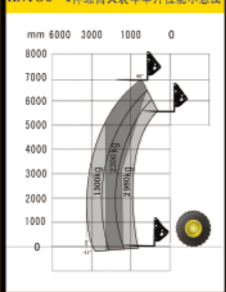


HNT25-4伸臂叉装车举升性能示意图



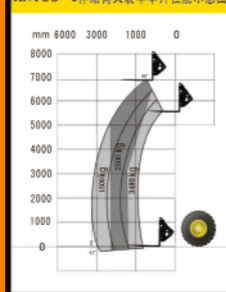
**HNT25-4**  
Lift Load Curve

HNT30-4伸臂叉装车举升性能示意图



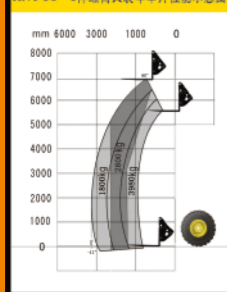
**HNT30-4**  
Lift Load Curve

HNT35-4伸臂叉装车举升性能示意图



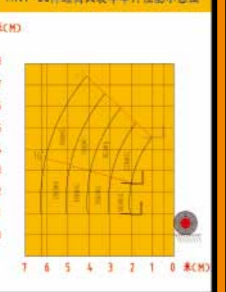
**HNT35-4**  
Lift Load Curve

HNT40-4伸臂叉装车举升性能示意图



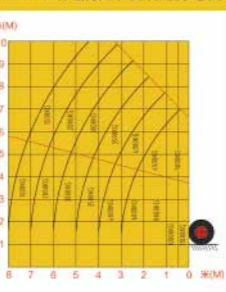
**HNT40-4**  
Lift Load Curve

HNT-50伸臂叉装车举升性能示意图



**HNT50**  
Lift Load Curve

HNT-110伸臂叉装车举升性能示意图



**HNT-110**  
Lift Load Curve



我们的专业，推动您的事业  
OUR SPECIALITY PROMOTE YOUR CAREER

参数表 Technical Parameter

项目 Items		单位 Unit	允差 Deviation allowed	HNT25-4	HNT30-4	HNT35-4	HNT40-4	HNT50-2	
基本参数 Basic parameter	额定起重量 Rated load	kg	-	2500	3000	3500	4000	5000	
	载荷中心距 Load center	mm	-	500	500	500	500	500	
	最大外伸距时举升重量 Load capacity @ max. Forward reach	kg	-	1000	1250	1550	1800	2500	
	基本臂最大作业高度 Basic boom max. Lifting height	mm	± 1.5%	4850	4850	4850	4850	4500	
	全伸臂最大作业高度 Max. Lifting height	mm	± 1.5%	7000	7000	7000	7000	7300	
	最大外伸距 Max. Horizontal reach	mm	± 1.5%	3350	3350	3350	3350	5700	
	最小外伸距 Min. Horizontal reach	mm	± 1.5%	930	930	930	930	1500	
	最小离地间隙 Min. Ground clearance	mm	± 1.5%	400	400	400	400	310	
	最小转弯半径 Min. Turning radius (外轮中心 outer tyre center)	mm	≤ 105%	6200	6200	6200	6200	6800	
	变幅仰角 Angle	臂架最大仰角 Boom frame upward angle	°	± 1.0	60	60	60	60	43
		臂架最小仰角 Boom frame downward angle	°	± 1.0	-11	-11	-11	-11	-14
	自重 Operating weight	kg	± 5%	8200	8600	9000	9440	13000	
整机外形尺寸 Overall dimension	长度 (含货叉) Length (with fork)	mm	± 2%	5730	5730	5730	5730	5288	
	宽度 Width	mm	± 2%	2390	2390	2390	2390	2300	
	高度 Height	mm	± 2%	2485	2485	2485	2485	2715	
	轮距(前/后) Wheel tread	mm	± 1%	1870	1870	1870	1870	1638 /1845	
	轴距 Wheel base	mm	± 1%	2700	2700	2700	2700	2988	
发动机额定功率/额定转速 Rated power / Rated turning speed		kW/rp m	-	60/2000	60/2000	60/2000	60/2000	75/2200	
传动系统 Driving system	空载最大行驶速度 Max. Travelling speed (unloaded)	km/h	± 10%	30	30	30	30	25	
	爬坡度 Gradeability	%	-	≥ 30%	≥ 30%	≥ 30%	≥ 30%	≥ 20%	
轮胎 Tyre	前轮 Front (2 pcs)	-	-	16/70-24	16/70-24	16/70-24	16/70-24	11.00-20(4个)	
	后轮 (2个) Rear (2 pcs)	-	-	10.00-20-16	10.00-20-16	10.00-20-16	10.00-20-16	9.00-20	
发动机 Engine	东风康明斯 Dongfeng Cummins	国二 National 2		4BTA3.9-C80II	4BTA3.9-C80II	4BTA3.9-C80II	4BTA3.9-C80II	4BTA3.9-C100II	
		国三 National 3		QSB3.9-C80	QSB3.9-C80	QSB3.9-C80	QSB3.9-C80	QSB3.9-C100	

产品参数  
PRODUCT  
PARAMETERS

产品参数配置 HNT-110 (伸缩臂吊装机) ——配吊具  
HNT-110 Telescopic Crane loader

项目 Item	参数 Parameter	备注 Remark
额定载荷 Rated load, kg	≤ 11000	
整机工作质量, Operating weight kg	13000	
主钩最大起升高度 Main hook max. lifting height, mm	7605	(主吊钩距离地面 from main hook to the ground)
全臂最大起升高度 Max. lifting height with full extended boom, mm	10300	(前吊点 front hook)
轴距 Wheel base, mm	2988	
前轮距 Front wheel tread, mm	1638	
后轮距 Rear wheel tread, mm	1845	
最小离地间隙 Min. ground clearance, mm	310	
整机长度 Overall length, mm	5288	不包含吊臂 without hook
整机最大宽度 Overall width, mm	2350	
整机最大总高度 Overall height, mm	2715	
驾驶室高度 Overall height of cab,mm	2400	
后悬长度 Rear overhang length, mm	1055	
主钩最大外伸距离 Main hook max. horizontal reach, mm	4800	(水平方向, Horizontal)
全臂最大外伸距离, Max. Horizontal reach with full extended boom,mm	7900	(水平方向, Horizontal)
吊臂倾翻角度上/下, Tipping angle of hook,up/down	22° /24°	
大臂倾翻角度上/下, Tipping angle of big arm,up/down	-14°/43°	
最小转弯半径 Min. turning radius, mm	6800	
最大爬坡能力 Max. gradeability, (°)	≥ 20%	
最大行驶速度 Max. travelling speed, Km/h	25	
前轮 Front wheel	11.00-20	
后轮 Rear wheel	9.00-20	



注：由于技术改进，该数据可能与产品不符，如有差异请以产品为准  
Note: the above data are subject to change without prior notice.